



PN 20

Class 150 / 225

DN 20/25

3/4" & 1"

VALVULA GLOBO DE OPERAÇÃO RÁPIDA

Flanges de acordo com a norma ANSI B16-24

Flanges in accordance with ANSI B16-24

Bridas de acuerdo con ANSI B16-24

Condições de trabalho Working conditions Condiciones de trabajo		
Vapor saturado Saturated steam Vapor saturado	150 PSI (10 BAR)	Sem choque Non shock Sin choque
Água, óleo Water, oil Agua, aceite	225 PSI (15 BAR)	

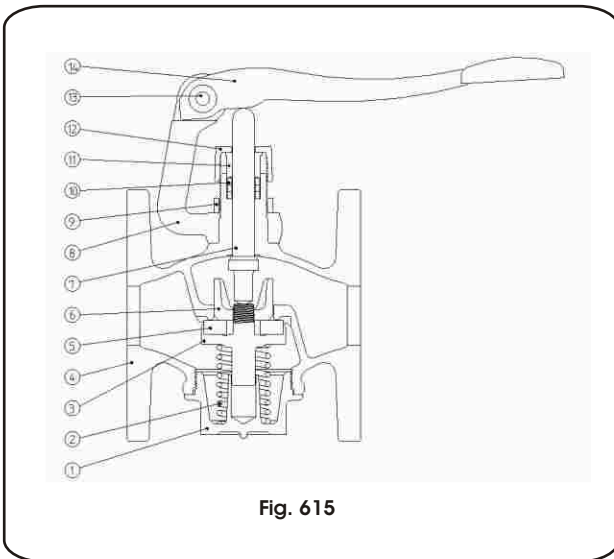
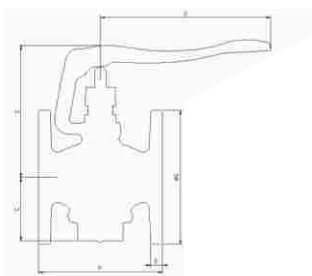


Fig. 615



Medidas Sizes Medidas		Dimensões Dimensions Dimensiones					
NPS*	DN**	B	C	D	E	F	ØG
3/4	20	45	90	87	87	86	98,4
1	25	54	105	121	95	100	107,9

* NPS: Nominal Pipe Size

** DN: Diámetro Nominal

Pos.	Descrição Description Descripción	Materiais Materials Materiales	NBR ASTM
1	Tampa Cap Bonete	Bronze Bronze Bronce	6314 C83600 B-62 Alloy C836
2	Mola Spring Resorte	Aço inox Stainless steel Acero inox	5601 AISI 302 A276
3	Porta disco Disc holder Porta disco	Bronze Bronze Bronce	6314 C83600 B-62 Alloy C836
4	Corpo Body Cuerpo	Bronze Bronze Bronce	6314 C83600 B-62 Alloy C836
5	Disco Disc Disco	PTFE	—
6	Guia do disco Disc guide nut Guia del disco	Bronze Bronze Bronce	6314 C83600 B-62 Alloy C836
7	Pino Pin Perno	Latão Brass Latón	6188 C37700 B-124 Alloy C377
8	Cavalete Support cradle Caballote	Bronze Bronze Bronce	6314 C83600 B-62 Alloy C836
9	Porca Nut Tuerca	Latão Brass Latón	5023 B-16 Alloy C360
10	Gaxeta Packing Empaque	PTFE	—
11	Preme gaxeta Packing gland Prensa empaque	Latão Brass Latón	6188 C37700 B124 Alloy C377
12	Porca gaxeta Packing nut Tuerca del empaque	Bronze Bronze Bronce	6314 C83600 B-62 Alloy C836
13	Pino elástico Elastic pin Perno elastico	Aço Steel Acero	—
14	Alavanca Lever Palanca	Bronze Bronze Bronce	6314 C83600 B-62 Alloy C836